



NEW!

VERSA3D200

CAPABLE OF MOBILE AND STATIONARY SCANNING

EFFICIENT - SAFE - ACCURATE - SIMPLE - PRACTICAL - AFFORDABLE



TECHNICAL SPECIFICATION

➤ **LASER WAVELENGTH**

905nm

➤ **LASER SAFETY**

Class 1 (IEC60825-1:2014)
(Eye Safe)

➤ **DETECTION RANGE(@ 100 klx)**

90 m @ 10% reflectivity
130 m @ 20% reflectivity
260 m @ 80% reflectivity

➤ **FIELD OF VIEW**

70.4° (Circular)

➤ **RANGE PRECISION (1σ @ 20m)**

1σ (@ 20m) ≤ 2 cm¹
1σ (@ 0.2~1m) ≤ 3 cm²

➤ **ANGULAR PRECISION (1σ)**

< 0.1°

➤ **BEAM DIVERGENCE**

0.28° (Vertical) × 0.03° (Horizontal)

➤ **OPERATING TEMPERATURE**

-4°F to 149°F (-20°C to 65°C)

➤ **POINT RATE**

100,000 points/s
(first or strongest return)
200,000 points/s (dual return)

➤ **DATA LATENCY**

≤ 2 ms

➤ **DATA PORT**

USB

➤ **FALSE ARM RATE (@ 100 klx)**

< 0.01%

➤ **ANGULAR PRECISION (1σ)**

< 0.1°

➤ **BEAM DIVERGENCE**

0.28° (Vertical) × 0.03° (Horizontal)

➤ **IP RATING**

IP67

➤ **POWER SUPPLY**

Rechargeable/Replaceable
High performance
+12V battery. Charger included.

➤ **POWER⁵**

8 W (average)

➤ **DIMENSIONS (cm)**

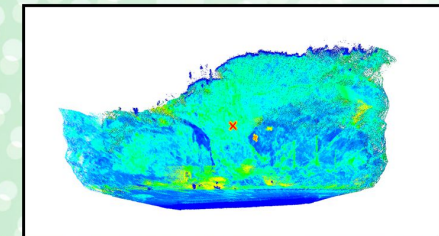
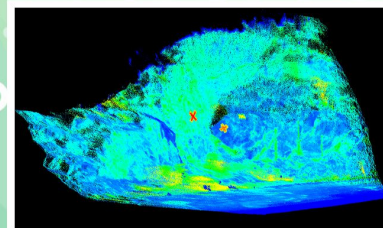
H: 17.1 W: 13.8 L: 12.0

➤ **WEIGHT**

950 g

PACKAGE INCLUDES

- Versa3D 200 LiDar
- Carrying Case
- Manual
- Training
- Battery
- Charger
- Tripod
- Mobile Scanning Pre-processing Software
- Geo-Referencing Markers
- Post-processing Software
- Phone and Email Support
- Optional Maintenance Plan



clickmox.com



info@clickmox.com



+1-705-207-5345