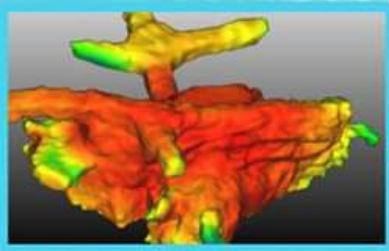


VERSA3D

VERSATILE 3D LASER SCANNING SYSTEM

EFFICIENT - SAFE - ACCURATE - SIMPLE - PRACTICAL - AFFORDABLE



ONE SYSTEM FOR ALL SCANNING NEEDS

- › Can be used as a standard CMS System
- › Can be mounted on tripod, post, ground vehicle, and aerial drone

TECHNICAL SPECS

- › Capable of Stationary and Mobile Scanning
- › Mountable to: Tripods, Ground Vehicles & UAV
- › Can be Mounted on Top or Bottom of MineFly Drone
- › Can be Powered from Drone Battery
- › Controllable from any Mobile Device
- › Scanning Principle: Rotating Mirror & Scanner Head
- › Scanning Capability: Stationary/Mobile (SLAM)
- › Stationary Scanning Speed: 30 sec
- › Range: 0.06 m up to 60 m
- › Laser Class: 1, safe to the eye in accordance with IEC
- › Laser Wavelength: 905 nm (invisible)
- › Diffuse Reflectance: 10%
- › Startup Time: Approx. 10 sec
- › Field of View: 270 deg
- › Angular Resolution: 0.25 deg
- › Ambient Temperature & Humidity: -10 deg C to +50 deg C, 85% RH
- › Storage Temperature & Humidity: -30 deg C to +70 deg C, 85% RH
- › Vibration Resistance: 10 to 55 Hz
- › Shock Resistance: 196m/sec² of 2 min for 30 min
- › Sensor Protection Structure: IP65
- › Weight: ~ 930 g with Battery; ~640 g without Battery
- › Material: Polycarbonate & Aluminum
- › Dimensions: (130x90x126)mm

BENEFITS AND FEATURES

- › Maximum scanning range: 60 m
- › Typical range for underground hard rock mines: 20 m
- › Impact-, water-, and dust-resistant enclosure
- › Single stationary scan takes 17 sec
- › Captures up to 42,000 points/sec
- › Weight < 1 kg with battery
- › Capable of scanning for more than 3 hours in single battery charge
- › Can be controlled by any mobile device, such as smartphone
- › Capable of mobile and stationary scanning
- › Designed for underground mines
- › Robust and cost-effective
- › Lightweight and easy to use
- › Extensively tested in underground mines
- › 3D visualization, localization and mapping
- › Uses SLAM algorithm for positioning and mapping

INCLUDES

- › Battery
- › Battery charger
- › Geo-Referencing Markers
- › Mobile Scan Pre-Processing Software
- › Carrying Case
- › Accessories
- › Phone and Email Support
- › Optional Maintenance Plan

